



Carbon Management Policy

Table of Contents

TABLE OF CONTENTS	2
ABOUT SUBVISION SURVEYS	3
CONTACT DETAILS	3
1. INTRODUCTION	4
2. CARBON MANAGEMENT POLICY	4
<i>This is the Carbon Management Policy of Subvision Surveys</i>	<i>4</i>

About Subvision Surveys

Subvision Surveys is a niche provider of professional surveying services to Utilities, Asset owners and to the construction industry.

Contact Details

Contact	Details
Company	Subvision Surveys Ltd
Contact	James Hook
Position	Director
Phone	07817 440 724
Email	james.hook@subvisionsurveys.co.uk
Address	Mapline House,14 Bull Lane, Rayleigh, Essex, SS6 8JG

1. Introduction

Subvision Surveys believes that its employees are its most valuable resource and that their health, safety and welfare is of paramount importance.

Subvision Surveys recognises health and safety as an integral part of its business performance by reducing workplace injuries and ill health, protecting the environment and reducing unnecessary losses and liabilities, and considers the successful management to be a key management objective.

Subvision Surveys is committed to:

Compliance with all legislative and regulatory requirements

The provision and maintenance of all plant, work equipment and safe systems of work

The safety and absence of risk to health in connection with the use, storage and transport of articles and substances

- The provision of suitable information, instruction, training and supervision
- A safe place of work, together with suitable means of access and exit
- The provision of emergency arrangements and facilities
- Continual improvement in all areas of health and safety management.

All employees are required to take reasonable care for their own health and safety and of others who may be affected by their actions or omissions, and cooperate with Subvision Surveys to ensure compliance with all legislative requirements and standards.

All business functions, sites and employees are expected to carry out their duties within the context of Subvision Surveys commitment to achieving high standards of health and safety in the workplace.

The Subvision Surveys Board is committed to developing a culture that supports the management of health and safety at all levels and shall ensure the necessary financial and physical resources, the competency of its employees and the provision of any necessary expert advice in order to support the health and safety policy.

2. Carbon Management Policy

This is the Carbon Management Policy of Subvision Surveys

Subvision Surveys acknowledges that its activities have an impact upon the environment and as an organisation we remain committed to a policy of reducing our carbon dioxide and other greenhouse emissions.

In managing our carbon we will:

- Annually assess our carbon footprint
- Identify opportunities to reduce Co2 by:
 - Making our activities more efficient
 - Making our activities greener and cleaner
- Look at options to offset our unavoidable emissions using sustainable offsetting projects
- Aim to reduce our carbon emissions by 25% by 2022/2023
- Allocate clear responsibility for achieving these policy aims
- Review our targets and policy on a regular basis
- Involve and encourage our staff to engage in environmental activities

This action plan is aimed at reducing waste, increasing efficiency and identify savings whilst embedding good environmental management into all of our activities.

Carbon Foot Print

Climate change is one of the greatest environmental challenges facing the world today. The release of carbon dioxide and other greenhouse gases are seen to be the main human influence on global climate. In the UK, carbon emissions targets are driven by the **Climate Change Act 2008**.

In order for Subvision Surveys to respond to these targets, a baseline year for carbon emissions has been established based on **2018/2019 data**.

The scope of the sources of emissions for establishing a baseline have been based initially around the following:

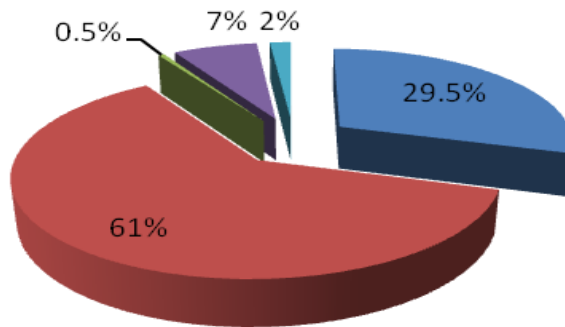
- Utilities use (electricity and water) in our serviced office.
- Business Air and Train travel
- Staff car mileage
- Waste Management

Carbon Emissions 2010/11

		Total CO ₂ Emission (tonnes)	Buildings	Transport	Waste and water (tonnes)
Baseline (tonnes)	CO₂ emissions	14,971	13,691	1,024	257

Baseline CO₂ Emissions (tonnes)

- Buildings - Gas
- Buildings - Elec
- Buildings - Oil
- Transport
- Waste & Water




Signed

Name ...JAMES HOOK.....

Position ...MANAGING DIRECTOR..... Date ...01/04/2021.....